

Model: LXC-15B-25B

Ultrasonic Water Meter

Feature:

- Cable interface options:
(1) M-BUS (2) RS-485 (3) Pulse output (4) LoRa
(5) LoRaWAN
- Size: DN15 to DN25mm, (1/2" – 1")
- Accuracy: R250
- Waterproof standard: IP 68



Main Technical Data:

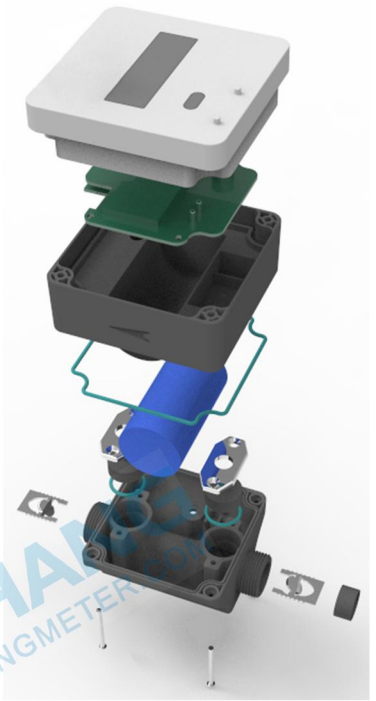
Item	Parameter
Meter Type	Ultrasonic Water Meter
Nominal Diameter (mm)	DN15~DN25
Q3/Q1	R250
Measurmedium	Water, homogeneous liquid, and filled with measured pipes.
Accuracy class	Class 2
Water pressure class	1.6MAP (16 bar)
Pressure-loss class	$\Delta p40$
Temperature class	T50
Installation position	H/V
The installation sensitivity	U10/D5
Electromagnetic class	E1
Environmental class	C
Key-press	Touch control technology
Types of Indicating device	LCD:9-digits, 0~99999.9999m ³
Menu Contents	Instantaneous flow (m3/h), cumulative flow (m3), screen detection, table address, cumulative working time (h), date (year/month/day), caliber, software version
Communication Interface	M-bus, RS485, Pulse Output, LoRa, LoRaWAN
Power Source	Lithium battery ER26500(replaceable)
Battery Voltage &Capacity	3.6V , 8500mAh
Life span	10 years.
IP code	IP68
Storage Temperature	-25℃~+55℃
Cable length	1.0 m

Model: LXC-15B-25B

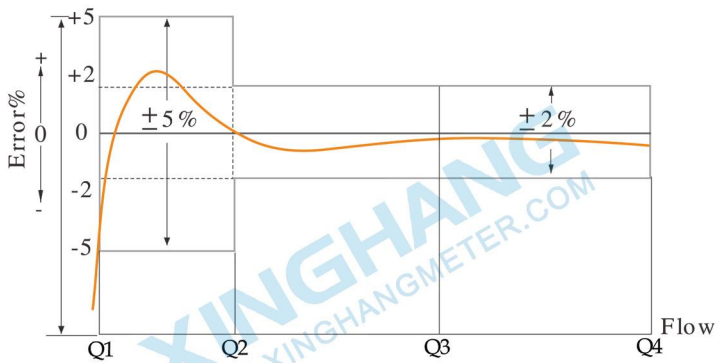
Drawing:

Flow Rate:

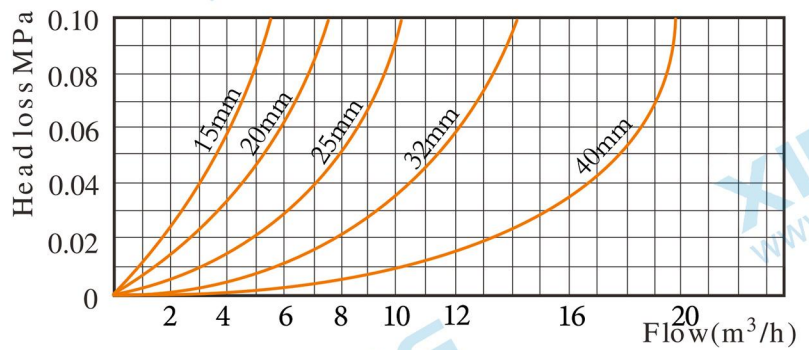
Parameter	Unit	Data Value		
Nominal Diameter		DN15	DN20	DN25
Start flow rate		0.003	0.005	0.005
Qmin(Q1)	m³/h	0.01	0.016	0.0252
QTransitional(Q2)		0.016	0.0256	0.040
Qn/permanent(Q3)		2.5	4.0	6.3
Qoverload(Q4)		3.125	5.0	7.875
Range ratio=Q3/Q1		250		
Temperature		T50		
Battery life	Year	10		



Error Curve:

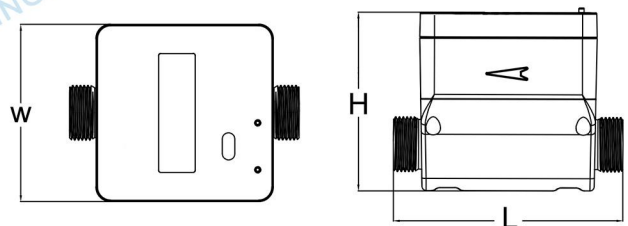


Head Loss Curve:



Dimensions:

Nominal Diameter(mm	DN15	DN20	DN25
Thread	G3/4B	G1B	G1 1/4B
L(mm)	110	130	160
H(mm)	80	85	90
W(mm)	85	85	85



WORKING CONDITION:

Water temperature: ≤50°C for cold water meter

Water pressure: ≤16 Bar



XINGHANG

Ningbo Xinghang Meter Technology Co.,Ltd

<https://www.xinghangmeter.com>

sales@xinghangmeter.com

+86-574-27805927