

Model: LXDG-13B-25B

Single Jet Water Meter

Feature:

- Single jet, Dry-dial
- Material body: Brass
- Size: DN15 to DN25mm, (1/2" – 1")
- Available for cold water (50°C), hot water (90°C)
- Accuracy: Class C / R160



Main Technical Data:

According to ISO4064 (GB/T778.1-1996) Standard

Size		Class	Qs	Qp	Qt	Qmin	Min reading	Max reading
DN(mm)	Inch		Overload flow	Nominal flow	Transitional flow	Min flow		
			m ³ /h		L/h		m ³	
15	1/2"	C	3	1.5	22.5	15	0.0001	99999
20	3/4"	C	5	2.5	37.5	25	0.0001	99999
25	1"	C	7	3.5	52.5	35	0.0001	99999

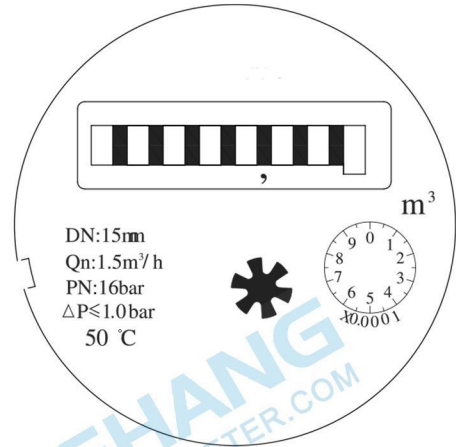
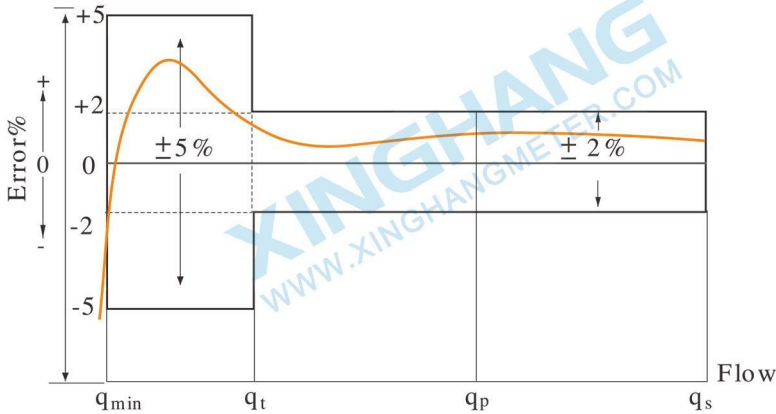
According to ISO4064 (GB/T778.1-2007) Standard

DN	Mm	15	20	25
SIZE	Inch	1/2"	3/4"	1"
Q4(m ³ /h)		3.125	5	7.875
Q3(m ³ /h)		2.5	4	6.3
R160	Q2(L/h)	25	40	63
	Q1(L/h)	15.625	25	39.375
Min reading(m ³)		0.0001	0.0001	0.0001
Max reading(m ³)		99999	99999	99999
Max pressure(MAP)		16	16	16
Max loss(Δ P)		63	63	63
Max temperature		T50	T50	T50

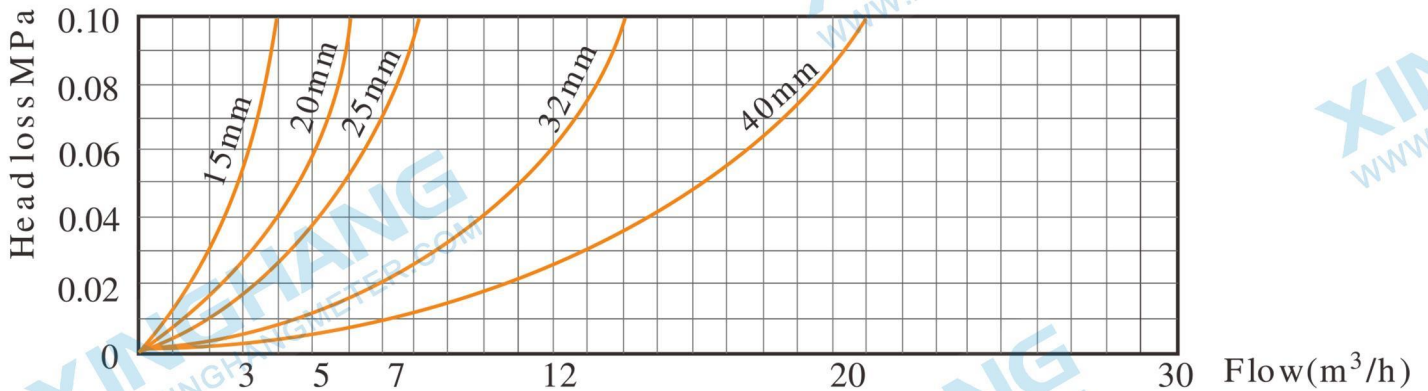
INDICATING ERROR

At low zone is ±5% from minimum flow rate (qmin) to transitional flow rate (qt) exclusive boundary
 At high zone is ±2% from transitional flow rate (qt) to overload flow rate (qs)

Model: LXDG-13B-25B

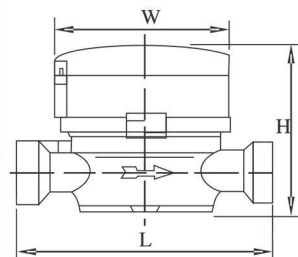


Head Loss Curve:



Dimensions and Weight:

Meter size Dia DN (mm)	L Length mm	W Width mm	H Height mm	Connecting Thread D	Weight Kg
15	110	77	80	G 3/4B	0.57
20	130	77	80	G 1B	0.67
25	160	77	85	G1 1/4B	0.91



WORKING CONDITION:

Water temperature: $\leq 50^{\circ}\text{C}$ for cold water meter
 Water temperature: $\leq 90^{\circ}\text{C}$ for hot water meter
 Working pressure: $\leq 1.6\text{Mpa}$



XINGHANG

Ningbo Xinghang Meter Technology Co.,Ltd
<https://www.xinghangmeter.com>
sales@xinghangmeter.com
 +86-574-27805927