

Model: LXDG-13A-20A

## Single Jet Water Meter

### Feature:

- Single jet, Dry-dial
- Material body: Nylon plastic
- Size: DN15-DN20mm, (1/2"-3/4")
- Available for cold water (50°C)
- Accuracy: Class B / R80 / R100



### Main Technical Data:

According to ISO4064 (GB/T778.1-1996) Standard

Size		Class	Qs	Qp	Qt	Qmin	Min reading	Max reading
DN(mm)	Inch		Overload flow	Nominal flow	Transitional flow	Min flow		
			m <sup>3</sup> /h			L/h		m <sup>3</sup>
15	1/2"	B	3	1.5	120	30	0.0001	99999
20	3/4"	B	5	2.5	200	50	0.0001	99999

According to ISO4064 (GB/T778.1-2007) Standard

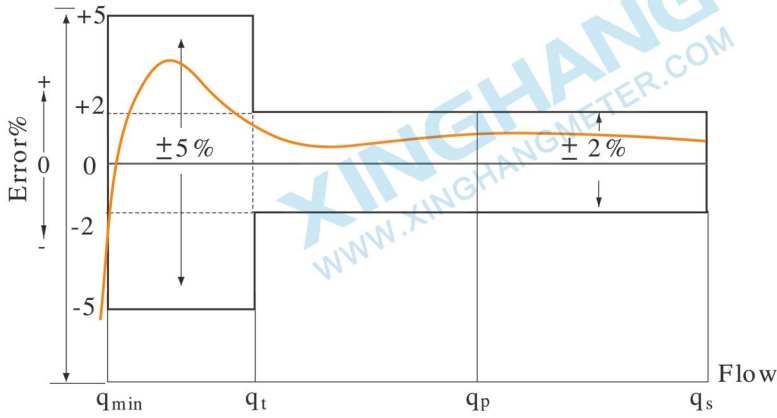
DN SIZE	Mm Inch	15 1/2"	20 3/4"
Q4(m <sup>3</sup> /h)		3.125	5
Q3(m <sup>3</sup> /h)		2.5	4
R80	Q2(L/h)	50	80
	Q1(L/h)	31.25	50
R100	Q2(L/h)	40	64
	Q1(L/h)	25	40
Min reading(m <sup>3</sup> )		0.0001	0.0001
Max reading(m <sup>3</sup> )		99999	99999
Max pressure(MAP)		16	16
Max loss(Δ P)		63	63
Max temperature		T50	T50

### INDICATING ERROR

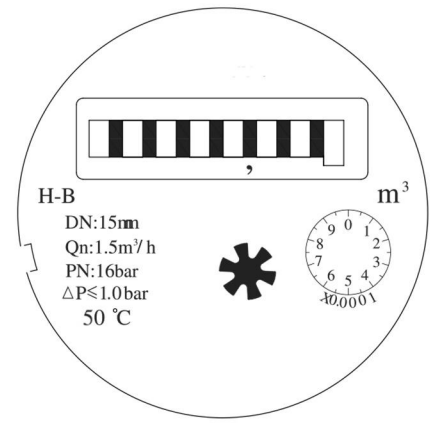
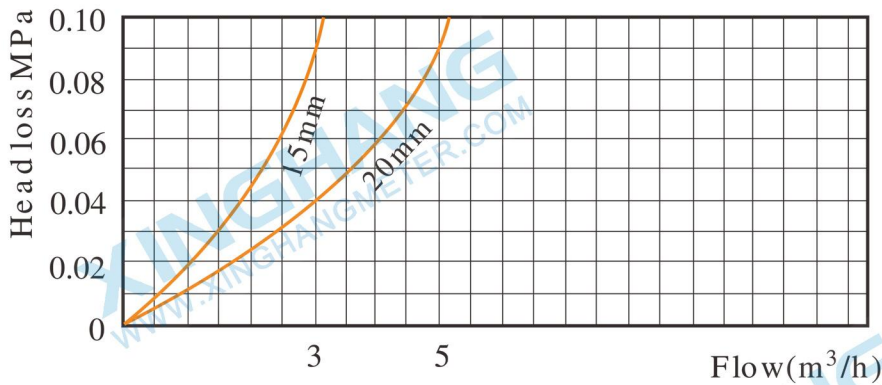
At low zone is ±5% from minimum flow rate (qmin) to transitional flow rate (qt) exclusive boundary  
 At high zone is ±2% from transitional flow rate (qt) to overload flow rate (qs)

Model: LXDG-13A-20A

**Error Curve:**

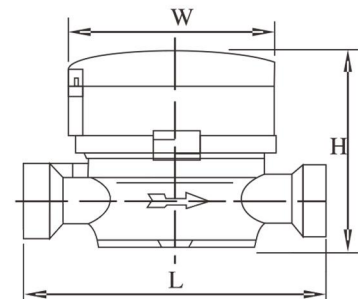


**Head Loss Curve:**



**Dimensions and Weight:**

Meter size Dia DN (mm)	L Length	W Width mm	H Height	Connecting Thread D	Weight Kg
15	110	77	80	G 3/4B	0.35
20	130	77	80	G 1"B	0.45



**WORKING CONDITION:**

Water temperature: ≤50°C for cold water meter

Working pressure: ≤1.6Mpa



**XINGHANG**

Ningbo Xinghang Meter Technology Co.,Ltd

<https://www.xinghangmeter.com>

[sales@xinghangmeter.com](mailto:sales@xinghangmeter.com)

+86-574-27805927