

Model: LXSG-50E

Multi Jet Water Meter

Feature:

- Multi jet, Dry-dial
- Material body: Gray cast iron / Ductile cast iron
- Size: DN50mm, (2")
- Available for cold water (50°C), hot water (90°C)
- Accuracy: Class B



Main Technical Data:

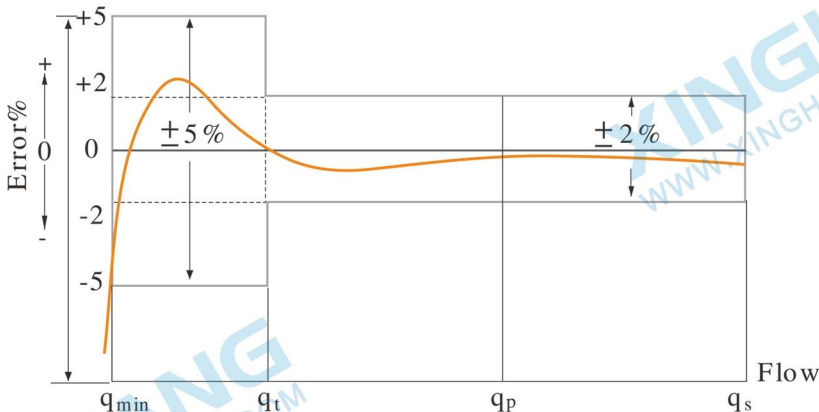
According to ISO4064 (GB/T778.1-1996) Standard

Size		Class	Qs	Qp	Qt	Qmin	Min reading	Max reading
DN(mm)	Inch		Overload flow	Nominal flow	Transitional flow	Min flow		
		m ³ /h			L/h		m ³	
50	2"	A	30	15	1500	600	0.001	99999
		B			1200	300		

INDICATING ERROR

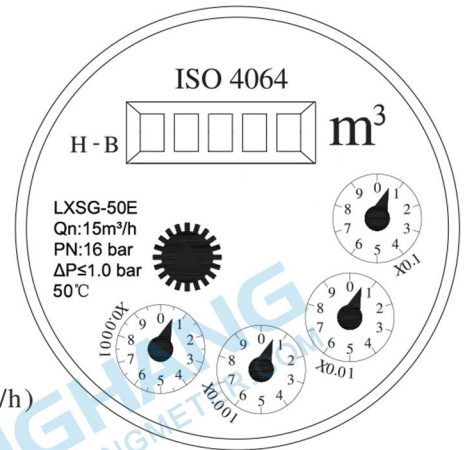
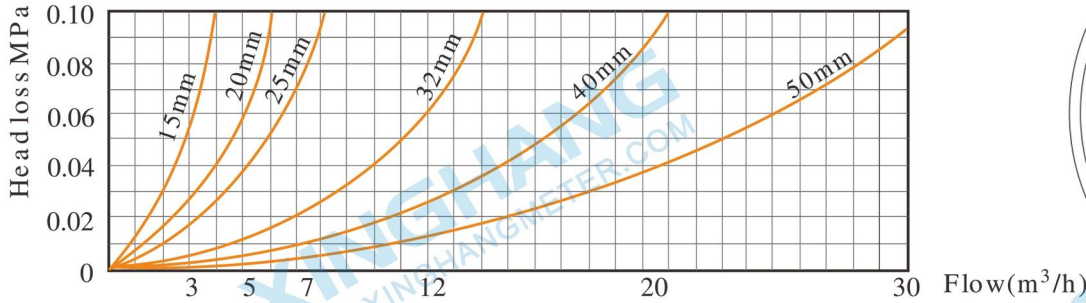
At low zone is $\pm 5\%$ from minimum flow rate (q_{min}) to transitional flow rate (q_t) exclusive boundary

At high zone is $\pm 2\%$ from transitional flow rate (q_t) to overload flow rate (q_s)



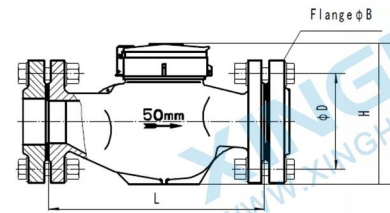
Model: LXSG-50E

Head Loss Curve:



Dimensions and Weight:

Meter size Dia DN (mm)	Length	Width	Height	Connecting Thread D	Weight Kg
50	280	165	175	FLANGE CONNECTING CONFORM TO GB4216.4 D=165 D1=125	14



WORKING CONDITION:

Water temperature: ≤50°C for cold water meter

Water temperature: ≤90°C for hot water meter

Working pressure: ≤1.6Mpa

XINGHANG
WWW.XINGHANGMETER.COM

XINGHANG
WWW.XINGHANGMETER.COM



XINGHANG

Ningbo Xinghang Meter Technology Co.,Ltd

<https://www.xinghangmeter.com>

sales@xinghangmeter.com

+86-574-27805927