

Model: LXLN-50E-300E

Irrigation Water Meter

Feature:

- Irrigation water meter, Dry-dial
- Material body: Gray cast iron / Ductile cast iron
- Size: DN50 to DN300mm, (2" – 12")
- Available for cold water (50°C)
- Accuracy: Class A standard



Main Technical Data:

According to ISO4064 (GB/T778.1-1996) Standard

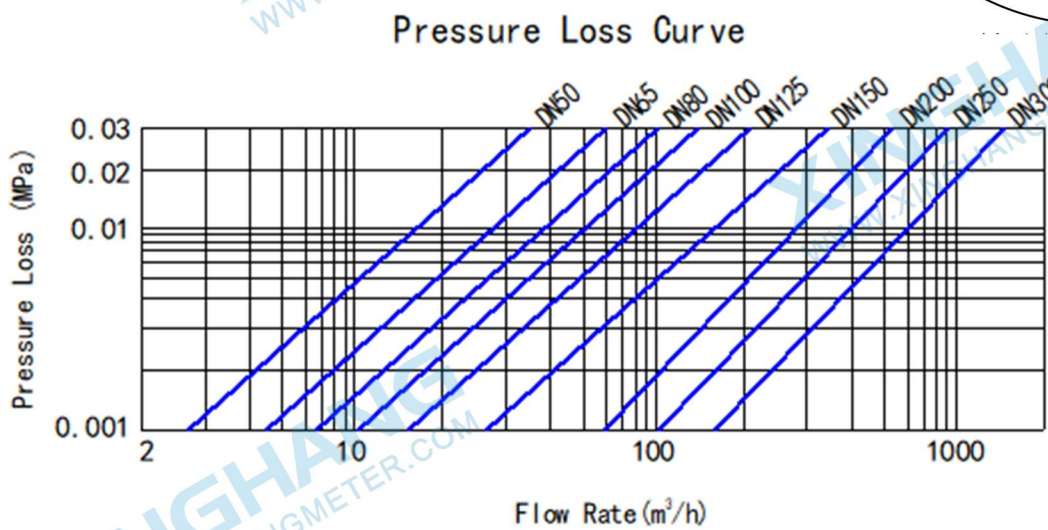
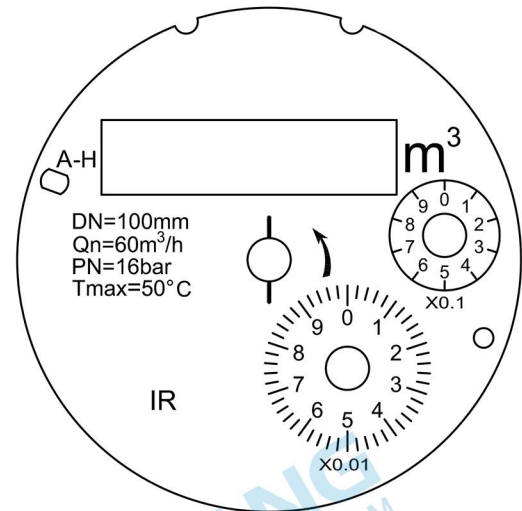
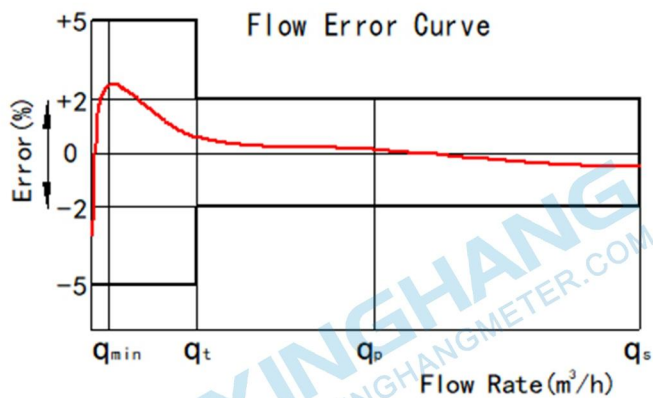
Size	Class	Max	Normal	Transitional	Min	Min	Max
		Flow	Flow	Flow	Flow	Reading	Reading
mm		m3/h				m3	
50	A	30	15	4.5	1.2	0.01	9,999,999
65	A	50	25	7.5	2	0.01	9,999,999
80	A	80	40	12	3.2	0.01	99,999,999
100	A	120	60	18	4.8	0.01	99,999,999
125	A	200	100	30	8	0.01	99,999,999
150	A	300	150	45	12	0.01	99,999,999
200	A	500	250	75	20	0.01	99,999,999
250	A	800	400	120	32	0.1	99,999,999
300	A	1200	600	180	48	0.1	99,999,999

INDICATING ERROR

At low zone is $\pm 5\%$ from minimum flow rate (q_{min}) to transitional flow rate (q_t) exclusive boundary

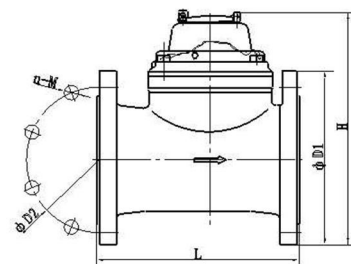
At high zone is $\pm 2\%$ from transitional flow rate (q_t) to overload flow rate (q_s)

Model: LXLN-50E-300E



Dimensions and Weight:

Size	Length	Width	Height	Connecting Flange			Weight	
				Outer Diameter D1	Bolt Circle D2	Connecting Bolt		
50	200	165	267	256	165	125	4-M16	10.4
65	200	185	279	268	185	145	4-M16	14
80	225	200	295	284	200	160	8-M16	16
100	250	220	306	295	220	180	8-M16	19
125	250	250	321	310	250	210	8-M16	25.3
150	300	285	351	340	285	240	8-M16	28.1
200	350	340	393	385	340	295	8-M16	48
250	400	395	441	435	395	350	12-M20	76
300	450	445	491	485	445	400	12-M20	85



WORKING CONDITION:

- Water temperature: ≤50°C for cold water meter
- Water temperature: ≤90°C for hot water meter
- Working pressure: ≤1.6Mpa



XINGHANG

Ningbo Xinghang Meter Technology Co.,Ltd
<https://www.xinghangmeter.com>
sales@xinghangmeter.com
 +86-574-27805927