

**Model: LXH-15A4-20A4**

**Volumetric Water Meter**



**Volumetric**

**Feature:**

- Volumetric piston type
- Material body: Brass
- Size: DN15 to DN20mm, (1/2" – 3/4")
- Available for cold water (50°C)
- Accuracy: Class C / R160 / R200

**Main Technical Data:**

**According to ISO4064 (GB/T778.1-1996) Standard**

Size		Class	Qs	Qp	Qt	Qmin	Min reading	Max reading
DN(mm)	Inch		Overload flow	Nominal flow	Transitional flow	Min flow		
			m³/h		L/h		m³	
15	1/2"	C	3	1.5	22.5	15	0.0001	99999
20	3/4"	C	5	2.5	37.5	25	0.0001	99999

**According to ISO4064 (GB/T778.1-2007) Standard**

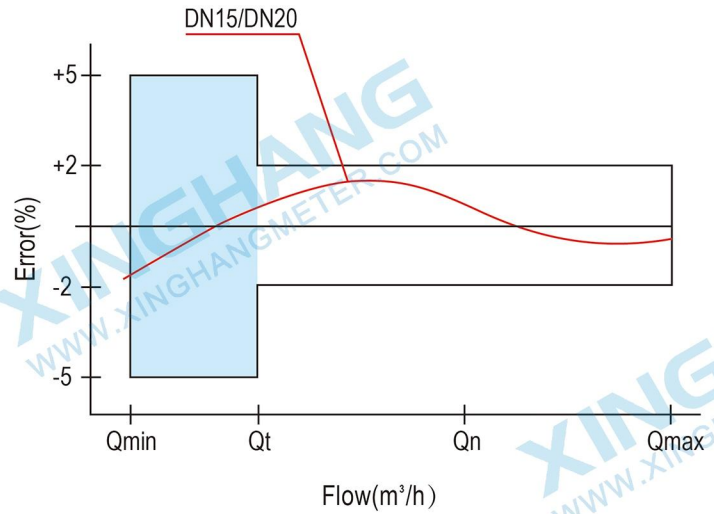
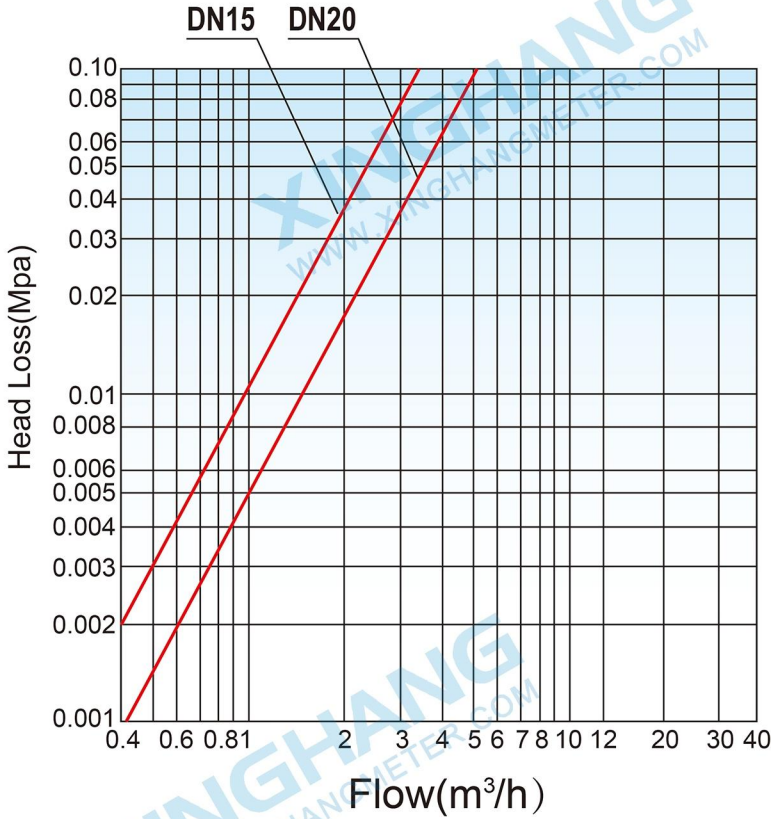
DN SIZE	Mm Inch	15 1/2"	20 3/4"
Q4(m³/h)		3.125	5
Q3(m³/h)		2.5	4
R160	Q2(L/h)	25	40
	Q1(L/h)	15.625	25
R200	Q2(L/h)	20	32
	Q1(L/h)	12.5	20
Min reading(m³)		0.0001	0.0001
Max reading(m³)		99999	99999
Max pressure(MAP)		16	16
Max loss(Δ P)		63	63
Max temperature		T50	T50

# Model: LXH-15A4-20A4

## INDICATING ERROR

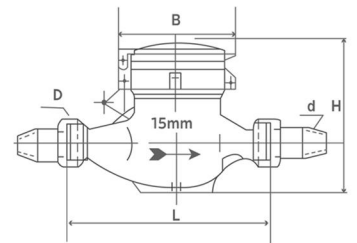
At low zone is  $\pm 5\%$  from minimum flow rate ( $q_{min}$ ) to transitional flow rate ( $q_t$ ) exclusive boundary  
 At high zone is  $\pm 2\%$  from transitional flow rate ( $q_t$ ) to overload flow rate ( $q_s$ )

## Head Loss and Error Curve:



## Dimensions and Weight:

Meter size Dia DN (mm)	L Length	B Width	H Height	Connecting Thread D	Weight Kg
15	165	95	121	G 3/4B	1.4
20	190	95	121	G 1B	1.7



## WORKING CONDITION:

Water temperature:  $\leq 50^{\circ}\text{C}$  for cold water meter

Working pressure:  $\leq 1.6\text{Mpa}$



**XINGHANG**

Ningbo Xinghang Meter Technology Co.,Ltd

<https://www.xinghangmeter.com>

[sales@xinghangmeter.com](mailto:sales@xinghangmeter.com)

+86-574-27805927