

**Model: LXSG1-15E-25E**

**Multi Jet Water Meter**

**Feature:**

- Multi jet, Dry-dial, Vertical type
- Material body: Gray cast iron / Ductile cast iron
- Size: DN15 to DN25mm, (1/2" – 1")
- Available for cold water (50°C), hot water (90°C)
- Accuracy: Class B



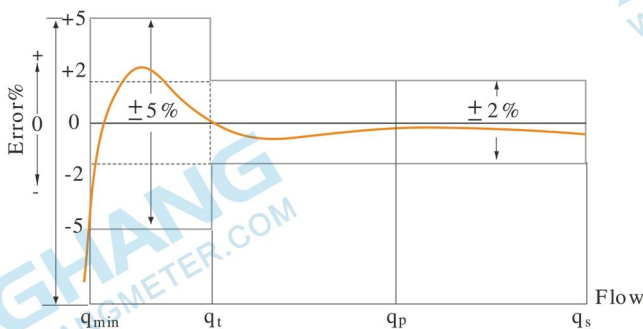
**Main Technical Data:**

According to ISO4064 (GB/T778.1-1996) Standard

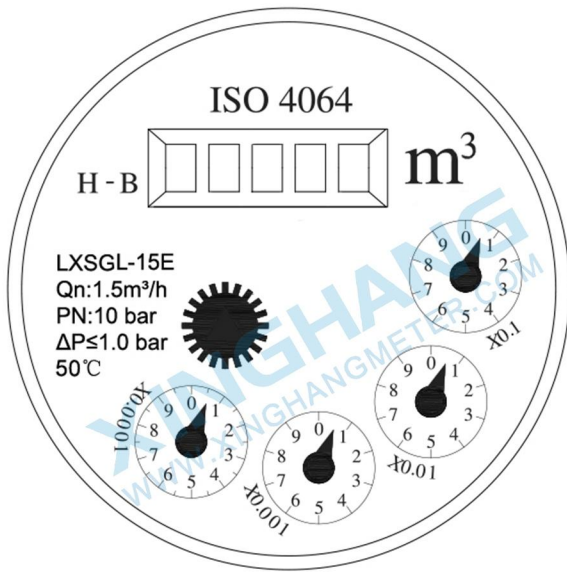
Size		Class	Qs	Qp	Qt	Qmin	Min reading	Max reading
DN(mm)	Inch		Overload flow	Nominal flow	Transitional flow	Min flow		
		m <sup>3</sup> /h			L/h		m <sup>3</sup>	
15	1/2"	A	3	1.5	150	60	0.0001	99999
		B			120	30		
20	3/4"	A	5	2.5	250	100	0.0001	99999
		B			200	50		
25	1"	A	7	3.5	350	140	0.0001	99999
		B			280	70		

**INDICATING ERROR**

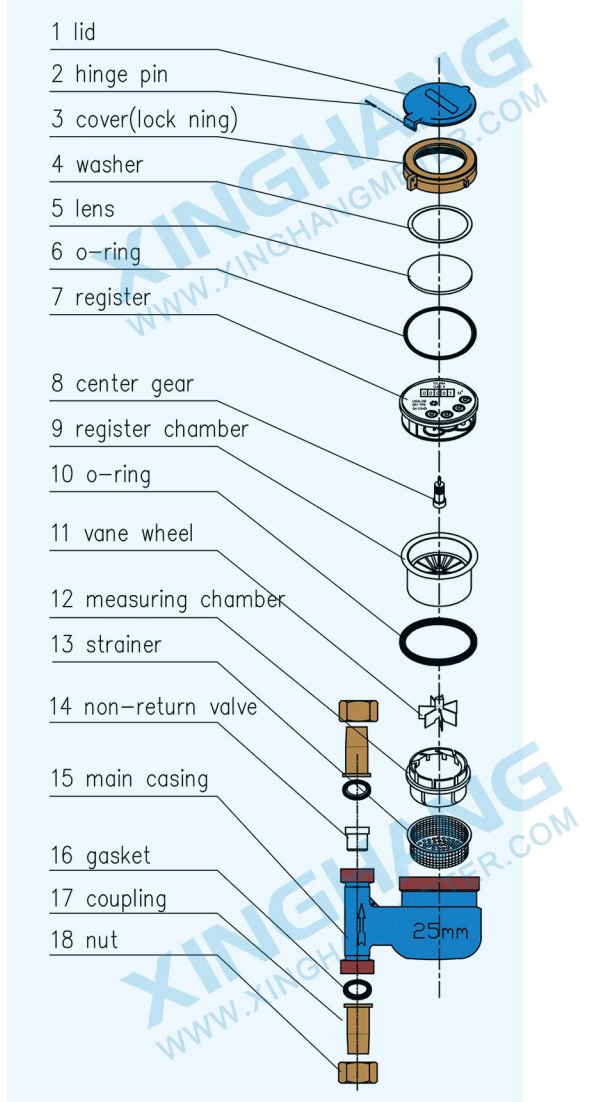
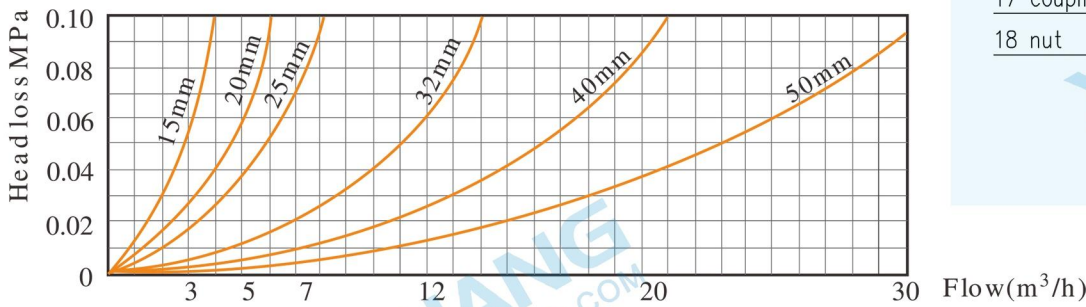
At low zone is ±5% from minimum flow rate (qmin) to transitional flow rate (qt) exclusive boundary  
 At high zone is ±2% from transitional flow rate (qt) to overload flow rate (qs)



# Model: LXSGL-15E-25E

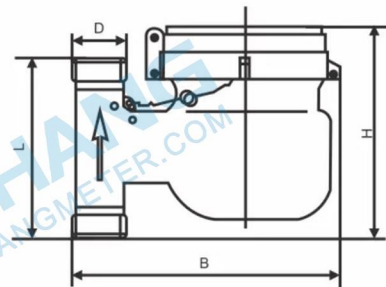


## Head Loss Curve:



## Dimensions and Weight:

Meter size Dia DN (mm)	L Length	B Width	H Height	Connecting Thread D	Weight Kg
15	95	135	120	G 3/4B	1.5
20	99	150	130	G 1B	1.7
25	110	160	130	G1 1/4B	3.0



## WORKING CONDITION:

Water temperature: ≤50°C for cold water meter

Water temperature: ≤90°C for hot water meter

Working pressure: ≤1.6Mpa



**XINGHANG**

Ningbo Xinghang Meter Technology Co.,Ltd

<https://www.xinghangmeter.com>

[sales@xinghangmeter.com](mailto:sales@xinghangmeter.com)

+86-574-27805927